

Story starter

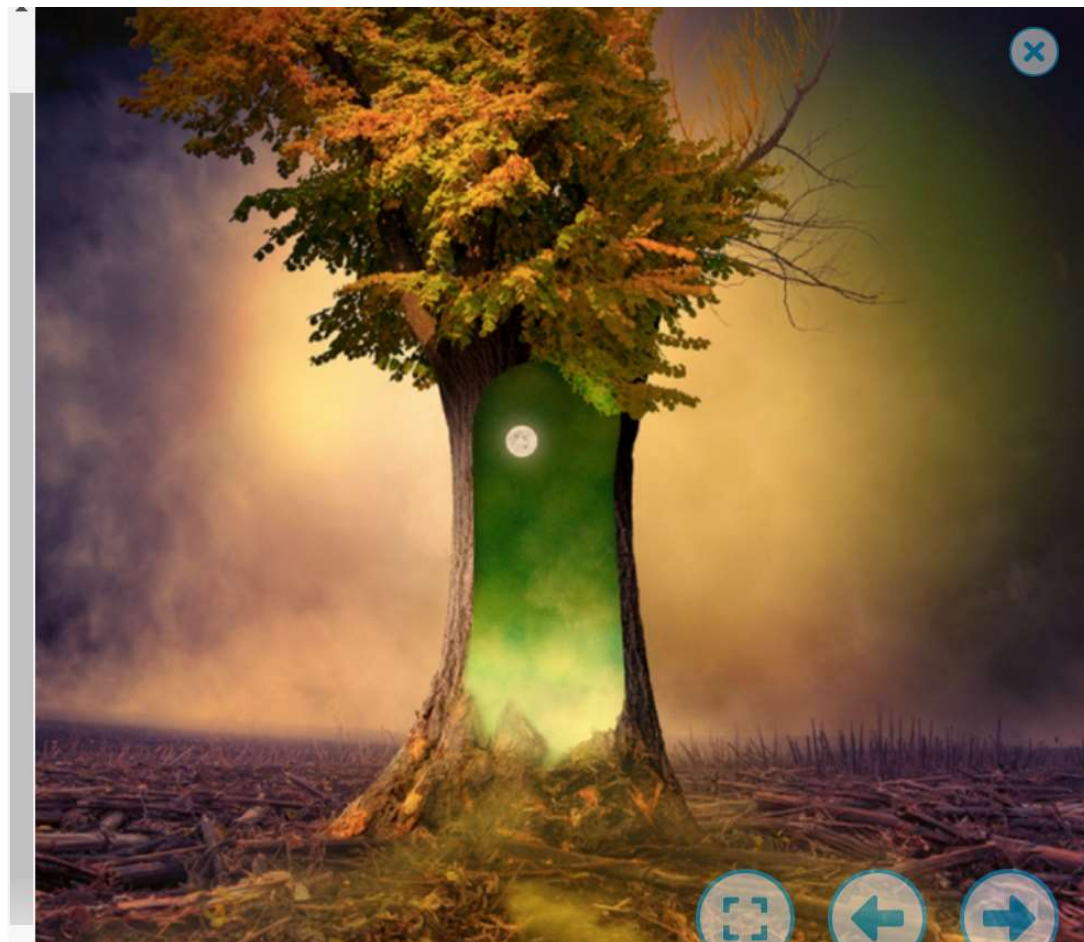
The tree was all that remained. A solitary figure, it stood there in defiance of the destruction surrounding it. The bark had begun to peel away, one piece at a time, joining the wreckage of other trees that lay scattered across the scorched earth.

This tree was different to the other trees. It contained magic. It contained hope...

Continue the story.

What is so different about this tree?

What has happened to the other trees around it?



Add your work on the next slide/in your book.



Grammar/punctuation challenge

A preposition is a word that shows the relationship between one thing and another.

It may tell you where a thing is in relation to something else.

For example:

The green, shining door appeared inside the tree.

It may tell you when something is in relation to another event.



Add your work on the next slide/in your book.

